

A. MATERIAL:

STRIKER: DIE CAST ZINC WITH CLEAR
CHROMATE FINISH

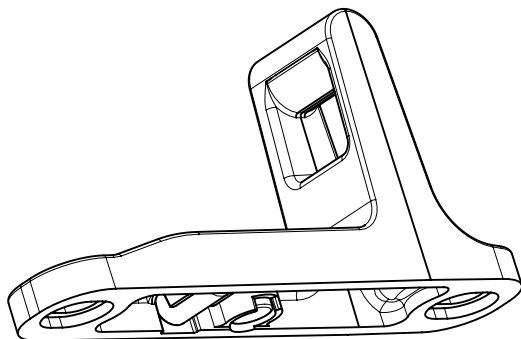
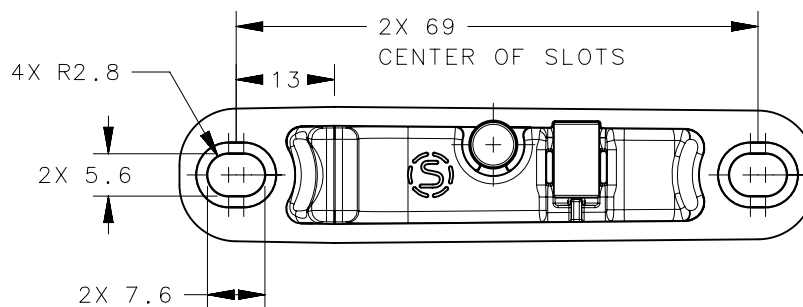
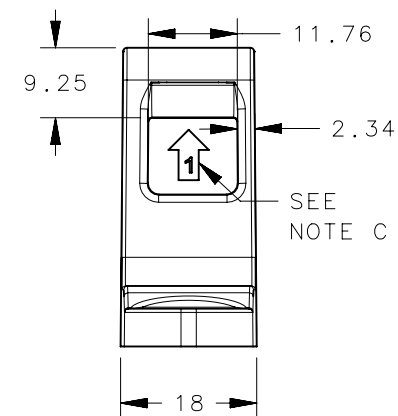
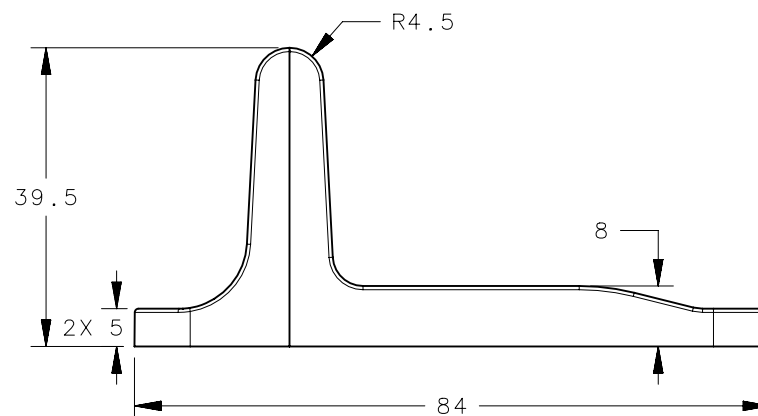
MAGNET: NdFeB, NICKEL PLATED

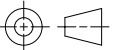

B. MOUNT STRIKER TO A RIGID SURFACE AND SECURE WITH M5 OR #10 FASTENERS THROUGH PROVIDED SLOTS. FASTENERS NOT PROVIDED.

C. AVERAGE ULTIMATE TENSILE LOAD DIRECTION 1
ON STRIKER BEFORE STRIKER FAILURE:
9200N (2068lbf) ref trR4-19532
NOTE STRENGTH DATA IS FOR STRIKER ONLY.

D. THE DOOR SENSOR STRIKER (WITH MAGNETS)
R4-90-804-10 CAN BE USED WITH SOUTHCO LATCHES
WITH A COMPATIBLE DOOR SENSOR OPTION.
CONTACT SOUTHCO FOR COMPATIBLE LATCHES.

REVISION HISTORY			
REV	DATE	BY	DESCRIPTION
B	05OCT2017	DJK/KAM	PRN: P2017-2454



R4-90-800-10		STRIKER (NO MAGNETS)		SEE NOTES			
R4-90-804-10		STRIKER, DOOR SENSOR		SEE NOTES			
PART NUMBER		DESCRIPTION		MATERIAL			
	THIRD ANGLE PROJECTION			<div> CONNECT • CREATE • INNOVATE</div> <div>DESCRIPTION</div> <div>STRIKER ASSEMBLY</div> <div><div>SIZE A4</div><div>SYSTEM NX</div><div>DWG NO. J-R4-90-804</div></div>			
	MILLIMETERS [IN]						
	TOLERANCES UNLESS OTHERWISE NOTED						
SURFACE AREA	ALL DIMENSIONS WITHOUT TOLERANCES ARE FOR REFERENCE ONLY.						
VOLUME							
PROPRIETARY ITEM EXCEPT FOR USES EXPRESSLY GRANTED IN WRITING, INFORMATION DISCLOSED HEREON IS CONFIDENTIAL AND ALL RIGHTS, PATENT AND OTHERWISE ARE RESERVED BY SOUTHCO, INC.		PER ASME Y14.5M-1994		DRAWN BY DJK/GGG	DATE 13MAY2014	SCALE 1:1	SHEET 1 OF 1